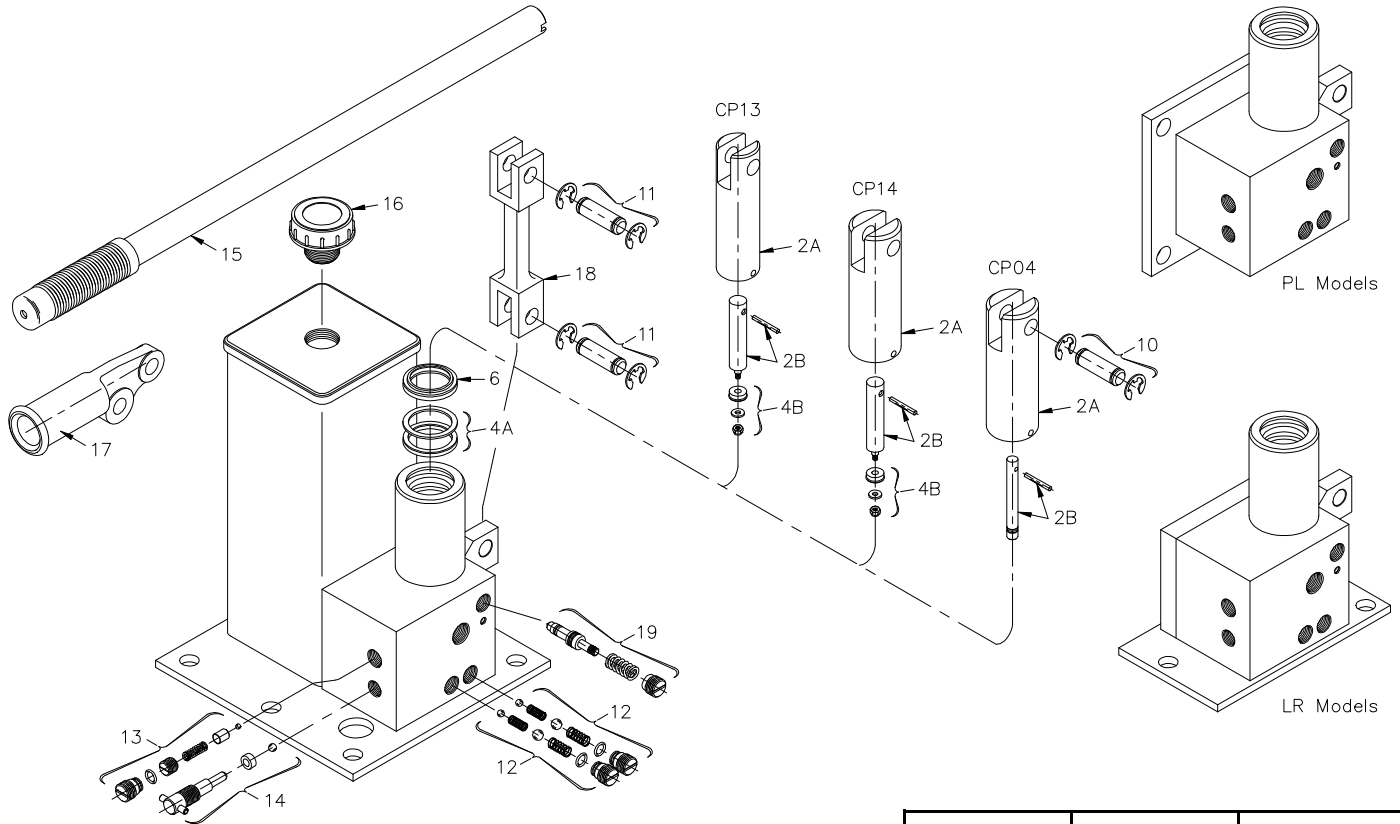


# CP SERIES

## STAR Hi-Lo Two Speed Screw Release Pumps

1 1/4", 1/2" - 1 1/2", 1/2" - 1 1/2", 5/16" Diameters



| 1 1/4" - 1/2"<br>Piston                  | 1 1/2" - 1/2"<br>Piston                  | 1 1/2" - 5/16"<br>Piston                 |
|--|--|--|
| MODELS:<br>CPS13<br>CPS13-LR<br>CPS13-PL | MODELS:<br>CPS14<br>CPS14-LR<br>CPS14-PL | MODELS:<br>CPS04<br>CPS04-LR<br>CPS04-PL |

These models can be:

- Hand operated
- With or without reservoir
- Base or flange mounted

Please give the following information when ordering parts:

- Part Number
- Part Name
- Model No. of Pump

| ITEM | PART NAME                              | PART NO.    | PART No.    | PART No.    |
|------|--|-------------|-------------|-------------|
|      | Repair Kit (Includes items marked *)   | CPS13-RK    | CPS14-RK    | CPS04-RK    |
| 2A   | Large Pump Piston                      | CP13-2      | CP14-2      | CP14-2      |
| 2B   | Small Pump Piston (Includes Pin)       | CP13-4RP    | CP13-4RP    | * CP04-4RP  |
| 4A   | Large Pump Piston Packing              | * P4-4RP    | * P5-4RP    | * P5-4RP    |
| 4B   | Small Pump Piston Packing              | * CP13-5RP  | * CP13-5RP  | ++          |
| 6    | Pump Piston Wiper                      | * P4-6      | * P5-6      | * P5-6      |
| 10   | Piston Pin (Includes Rings)            | CP13-10RP   | CP14-10RP   | CP14-10RP   |
| 11   | Link Pin (Includes Rings) (2 Required) | CP13-10RP   | CP13-10RP   | CP13-10RP   |
| 12   | Pump Valve (Complete) (2 Required)     | * P1-12RP   | * P1-12RP   | * P1-12RP   |
| 13   | Overload Valve (Complete)              | * CP13-13RP | * CP13-13RP | * CP13-13RP |
| 14   | Release Valve (Complete)               | * P1-3RP    | * P1-3RP    | * P1-3RP    |
| 15   | Hand Pump Lever                        | P1-5        | P1-5        | P1-5        |
| 16   | Breather / Filter                      | P1-16       | P1-16       | P1-16       |
| 17   | Hand Pump Lever Socket                 | CP13-9      | CP13-9      | CP13-9      |
| 18   | Pump Link                              | CP13-12     | CP13-12     | CP13-12     |
| 19   | Relief Valve (Complete)                | * CP13-25RP | * CP13-25RP | * CP13-25RP |

++ Included in Item 2B (Part No. CP04-4RP)