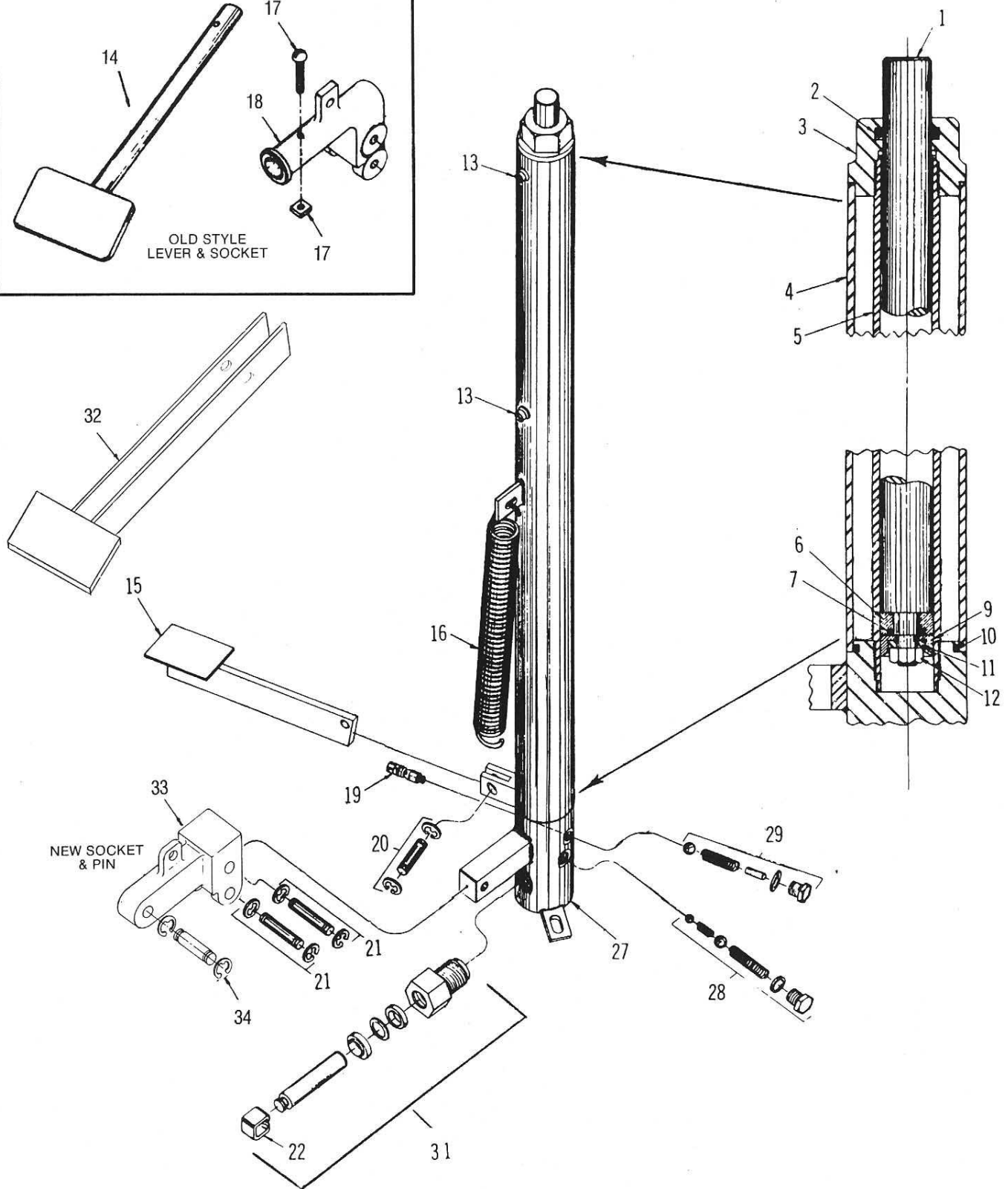
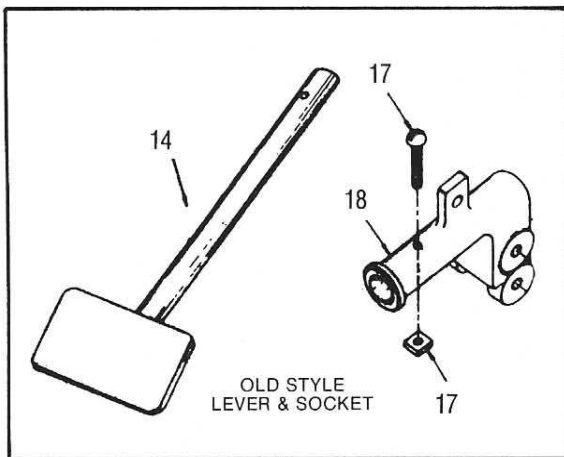


STAR HYDRAULIC FOOT OPERATED LIFT MODEL — HF500



Star Hydraulics Foot Operated Lift Model HF500

Parts List

| Item No. | Part No. | Part Name |
|----------|------------|---|
| 1 | HF500-6 | Ram (Hard Chrome Plate) Specify Travel |
| 2 (K) | HF500-4 | Top Nut "O" Ring |
| 3 | HF500-3 | Top Nut |
| 4 | HF500-2 | Reservoir Tube – Specify Travel |
| 5 | HF500-5 | Inside Cylinder Tube – Specify Travel |
| 6 | HF500-8 | Ram Cup Support Washer |
| 7 | HF500-8A | Ram Cup "O" Ring (Obsolete) Turn Piston Over |
| 9 (K) | HF500-7 | Ram Cup |
| 10 (K) | HF500-32 | Body "O" Ring (Order 2) |
| 11 | HF500-9 | Ram Cup Washer |
| 12 | QH525-13 | Ram Cup Nut |
| 13 | HF500-30 | Filler Screw and Washer (Order 2) |
| 15 | HF500-23RP | Foot Release Lever Assembly |
| 16 | HF500-22 | Piston Lever Return Spring |
| * 19 (K) | HF500-15RP | Release Plunger (Includes Seals) |
| 20 (K) | HF500-24RP | Release Lever Pin (Includes Retaining Rings) |
| 21 (K) | HF500-25RP | Lever Socket Pin (Order 2) Includes Retaining Rings |
| * 22 (K) | HF500-29 | Pump Piston Clip |
| * 27 | HF500-1RP | Body Assembly (Includes all parts with *) |
| * 28 (K) | HF500-51RP | Pump Valve (Complete) |
| * 29 (K) | HF500-50RP | Release Valve (Complete) |
| 30 | HF500-53RP | Hydraulic Repair Kit (All Items With "K") |
| * 31 (K) | HF500-54RP | Pump Piston Assembly – Ready to Install – Includes Item #22 |
| 32 | HF500-44 | Lever Arm (New Style) |
| 33 | HF500-43 | Socket (New Style) |
| 34 | HF500-42RP | Lever Arm Pin (Includes Retaining Rings) New Style |

IMPORTANT – Please give the following information when ordering parts

- (a) Part Number
- (b) Part Name

NOTE: RV Model Overload Valve Assembly Parts are not available
Send to factory for Overload Repair.