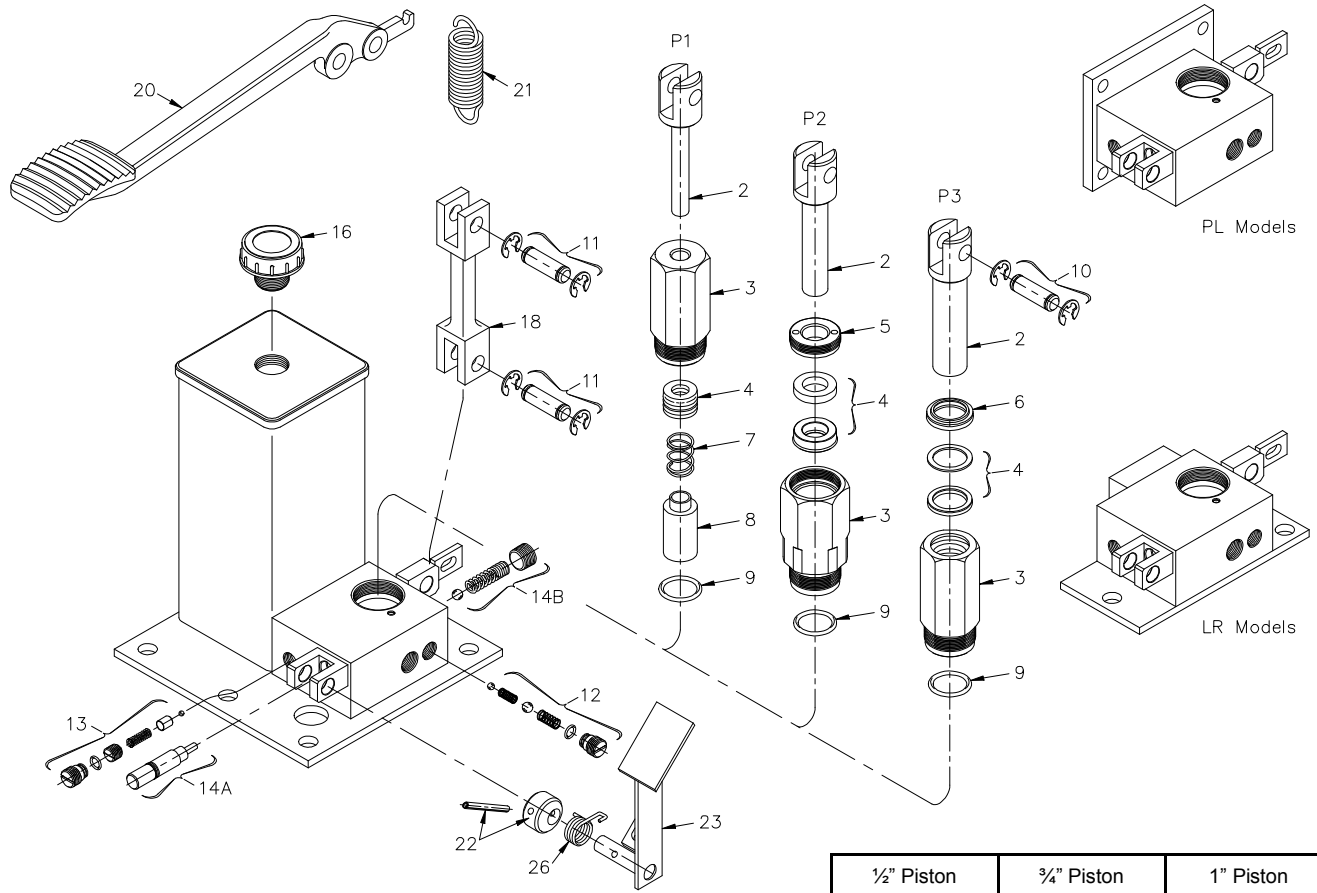


P SERIES

STAR Single Piston Cam Release Pumps, Foot Operated

1/2" - 3/4" - 1" Diameters



1/2" Piston	3/4" Piston	1" Piston
MODELS: FP1AC FP1AC-LR FP1AC-PL	MODELS: FP2AC FP2AC-LR FP2AC-PL	MODELS: FP3AC FP3AC-LR FP3AC-PL

These models can be:

- Foot operated
- With or without reservoir
- Base or flange mounted

Please give the following information when ordering parts:

- Part Number
- Part Name
- Model No. of Pump

ITEM	PART NAME	PART NO.	PART NO.	PART NO.
	Repair Kit (Includes items marked *)	P1AC-RK	FP2AC-RK	P3AC-RK
2	Pump Piston	P1-7	P2-4	P3-2
3	Pump Barrel	P1-6	P2-2	P3-3
4	Pump Piston Packing	* P1-17	* P2-5RP	* P3-4RP
5	Pump Packing Nut	---	P2-3	---
6	Pump Piston Wiper	---	---	* P3-6
7	Pump Packing Spring	P1-18	---	---
8	Pump Piston Sleeve	P1-19	---	---
9	Pump Barrel Seal	* P1-20	* P1-20	* P1-20
10	Piston Pin (Includes Rings)	CP13-10RP	CP13-10RP	CP13-10RP
11	Link Pin (Includes Rings) (2 Required)	CP13-10RP	CP13-10RP	CP13-10RP
12	Pump Valve (Complete)	* P1-12RP	* P1-12RP	* P1-12RP
13	Overload Valve (Complete)	* CP13-13RP	* P3-13RP	* P3-13RP
14A	Release Plunger (Complete)	* CP13-17RP	* CP13-17RP	* CP13-17RP
14B	Release Valve (Complete)	* PAC-18RP	* PAC-18RP	* PAC-18RP
16	Breather / Filter	P1-16	P1-16	P1-16
18	Pump Link	CP13-12	CP13-12	CP13-12
20	Foot Pump Lever	FCP12-9	FCP12-9	FCP12-9
21	Foot Pump Lever Return Spring	FCP13-23	FCP13-23	FCP13-23
22	Foot Release Lever Cam & Pin	FCP13-13RP	FCP13-13RP	FCP13-13RP
23	Foot Release Lever	FP1AC-14	FP1AC-14	FP1AC-14
26	Foot Release Lever Return Spring	FP1AC-95	FP1AC-95	FP1AC-95