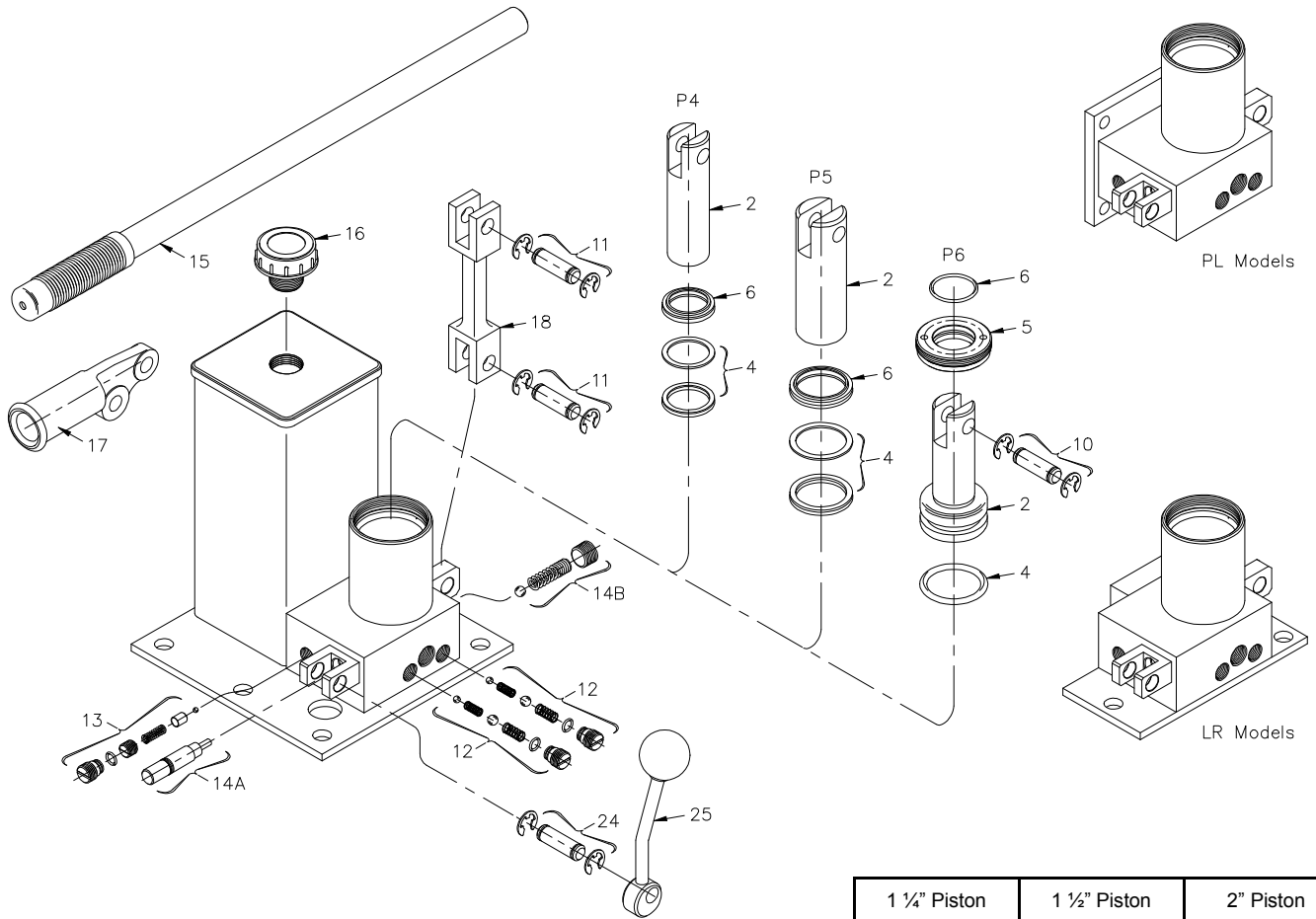


# P SERIES

## STAR Single Piston Cam Release Pumps, Hand Operated

1 1/4" - 1 1/2" - 2" Diameters



1 1/4" Piston	1 1/2" Piston	2" Piston
MODELS: P4AC P4AC-LR P4AC-PL	MODELS: P5AC P5AC-LR P5AC-PL	MODELS: P6AC P6AC-LR P6AC-PL

These models can be:

- Hand operated
- With or without reservoir
- Base or flange mounted

Please give the following information when ordering parts:

- Part Number
- Part Name
- Model No. of Pump

ITEM	PART NAME	PART NO.	PART No.	PART No.
	Repair Kit (Includes items marked *) .....	P4AC-RK	P5AC-RK	P6AC-RK
2	Pump Piston .....	P4-2	P5-2	P6-2
4	Pump Piston Packing .....	* P4-4RP	* P5-4RP	* P6-4
5	Pump Packing Nut .....	---	---	CP15-7
6	Pump Piston Wiper .....	* P4-6	* P5-6	* CP15-4
10	Piston Pin (Includes Rings) .....	CP13-10RP	CP14-10RP	CP13-10RP
11	Link Pin (Includes Rings) (2 Required) .....	CP13-10RP	CP13-10RP	CP13-10RP
12	Pump Valve (Complete) (2 Required) .....	* P1-12RP	* P1-12RP	* P1-12RP
13	Overload Valve (Complete) .....	* P4-13RP	* P5-13RP	* P5-13RP
14A	Release Plunger (Complete) .....	* CP13-17RP	* CP13-17RP	* CP13-17RP
14B	Release Valve (Complete) .....	* PAC-18RP	* PAC-18RP	* PAC-18RP
15	Hand Pump Lever .....	CP13-23	CP13-23	CP13-23
16	Breather / Filter .....	P1-16	P1-16	P1-16
17	Hand Pump Lever Socket .....	CP13-9	CP13-9	CP13-9
18	Pump Link .....	CP13-12	CP13-12	CP13-12
24	Hand Release Lever Pin (Includes Rings) .....	CP13-10RP	CP13-10RP	CP13-10RP
25	Hand Release Lever .....	P1AC-14	P1AC-14	P1AC-14